

# LASE ONE

## MICRO WELDING

- S P O T P L A S M A -

### THE ALTERNATIVE TO LASER WELDING

- Plasma arc spot welding (0 to 300 joules)
- Weld quality and aspect very similar to that of laser weld
- No overheating / deformations
- Easy assembly and repair welds of very small as well as large parts
- Weld time adjustable to the tenth of a millisecond (pulse duration 0.1 to 10 ms)
- Reliable and easy to use
- Programmable
- Welding of ferrous / non-ferrous / precious materials (gold, silver, etc.)
- Economical and safe
- Welding power and weld time independently adjustable



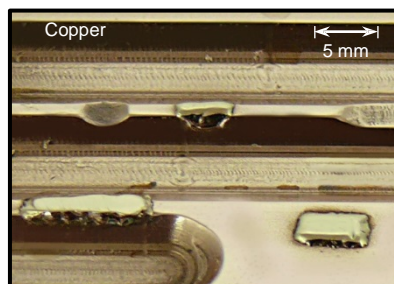
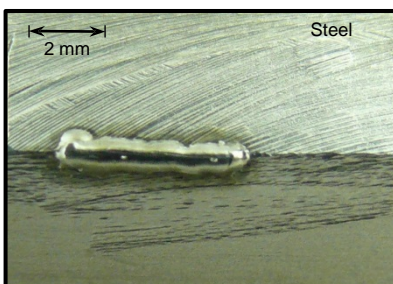
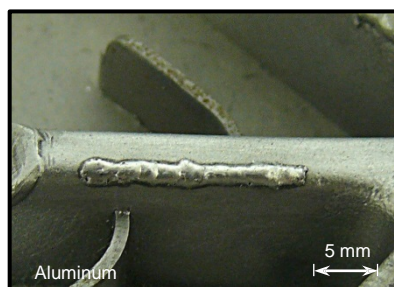
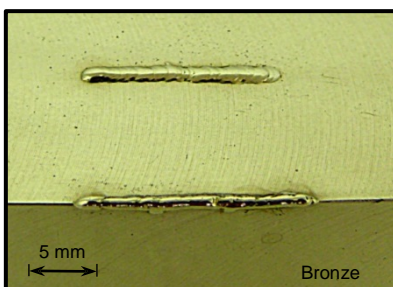
### LASE ONE MODELS

200j

250j

300j

### TYPICAL APPLICATIONS



LASE ONE technology is the solution to all your problems when it comes to complex assembly and repair micro-welding.

LASE ONE delivers welding intensity with total control and precision, for a wide range of applications, materials and configurations. Efficient, easy to use, compact and versatile, it displays the qualities of pulsed YAG laser welding and the benefits of an electric solution: simplicity and economy.

## TECHNICAL CHARACTERISTICS

MODEL	LASE ONE 200j	LASE ONE 250j	LASE ONE 300j
Maximum weld energy at output (joules)	200 joules	250 joules	300 joules
Power supply	1~220 V / 50 Hz / 60 Hz		
Control type	Current regulation		
Energy settings	By 1% increments of total energy		
Pulse duration	Adjustable (0.1 ms to 10 ms)		
Generator cooling	Forced air		
Size	L 420 mm x W 240 mm x H 280 mm		
Weight	25 Kg		
Programming	9 adjustable programmes		
Adjustable external settings	<ul style="list-style-type: none"> <li>▪ Welding power (0 to 99 %)</li> <li>▪ Pulse duration (0.1 to 10 ms – by 0.1 ms increments)</li> </ul>		
Maximum pulse rate	Factory configuration: 4 pulses / second (300j)		
Weld area protection	Inert gas (argon 4.5—UN1006)		
Accessories and options (*) Model-dependent	<ul style="list-style-type: none"> <li>▪ Control pedal</li> <li>▪ Micro-welding torch</li> <li>▪ Ø 1.0 mm ; 1.6 mm ; 2.4 mm electrodes</li> <li>▪ Clamp holders for Ø 1.0 mm ; 1.6 mm ; 2.4 mm electrodes</li> <li>▪ Collet bodies for Ø 1.0 mm ; 1.6 mm ; 2.4 mm electrodes</li> <li>▪ Nozzles</li> <li>▪ Welding helmet with x2.5 dioptre magnifying lens*</li> <li>▪ Binocular stereo microscope x4 to x20 with articulated arm*</li> <li>▪ (shutter &amp; adjustable 64-LED ring light illuminator)</li> </ul>		

## ACCESSORIES



Mobile telescopic generator stand



Binocular stereo microscope



Welding helmet



Control pedal



Microwelding torch

Official distributor for SST Microwelding:  
 118 South Jennings Street - Sioux City, Iowa 51101  
 Phone (800) 255-6046 (712) 255-6046 Fax (712) 252-5619  
 info@equipmentsalesco.net / www.equipmentsalesco.net

